

**Anti-RPL12 Antibody**  
**Rabbit polyclonal antibody to RPL12**  
**Catalog # AP60626****Specification**

---

**Anti-RPL12 Antibody - Product Information**

Application	WB, IHC
Primary Accession	<a href="#">P30050</a>
Other Accession	<a href="#">P35979</a>
Reactivity	Human, Mouse, Rat, Pig, Bovine, Dog
Host	Rabbit
Clonality	Polyclonal
Calculated MW	17819

**Anti-RPL12 Antibody - Additional Information****Gene ID** 6136**Other Names**

60S ribosomal protein L12

**Target/Specificity**

Recognizes endogenous levels of RPL12 protein.

**Dilution**

WB~~WB (1/500 - 1/1000), IH (1/100 - 1/200)

IHC~~1:100~500

**Format**

Liquid in 0.42% Potassium phosphate, 0.87% Sodium chloride, pH 7.3, 30% glycerol, and 0.09% (W/V) sodium azide.

**Storage**

Store at -20 °C. Stable for 12 months from date of receipt

**Anti-RPL12 Antibody - Protein Information****Name** RPL12**Function**

Component of the large ribosomal subunit (PubMed:<a href="http://www.uniprot.org/citations/25901680" target="\_blank">25901680</a>). The ribosome is a large ribonucleoprotein complex responsible for the synthesis of proteins in the cell (PubMed:<a href="http://www.uniprot.org/citations/25901680" target="\_blank">25901680</a>). Binds directly to 26S ribosomal RNA (PubMed:<a href="http://www.uniprot.org/citations/25901680" target="\_blank">25901680</a>).

**Cellular Location**

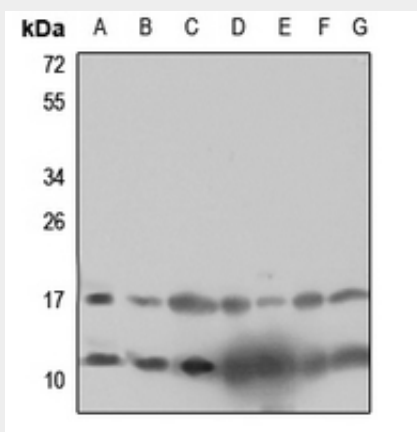
Cytoplasm

### Anti-RPL12 Antibody - Protocols

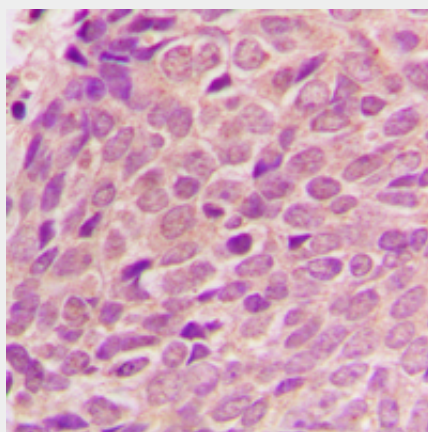
Provided below are standard protocols that you may find useful for product applications.

- [Western Blot](#)
- [Blocking Peptides](#)
- [Dot Blot](#)
- [Immunohistochemistry](#)
- [Immunofluorescence](#)
- [Immunoprecipitation](#)
- [Flow Cytometry](#)
- [Cell Culture](#)

### Anti-RPL12 Antibody - Images



Western blot analysis of RPL12 expression in HEK293T (A), Hela (B), HGC27 (C), mouse liver (D), mouse kidney (E), rat liver (F), rat kidney (G) whole cell lysates.



Immunohistochemical analysis of RPL12 staining in human breast cancer formalin fixed paraffin embedded tissue section. The section was pre-treated using heat mediated antigen retrieval with sodium citrate buffer (pH 6.0). The section was then incubated with the antibody at room temperature and detected using an HRP conjugated compact polymer system. DAB was used as the chromogen. The section was then counterstained with haematoxylin and mounted with DPX.

### Anti-RPL12 Antibody - Background

KLH-conjugated synthetic peptide encompassing a sequence within the center region of human RPL12. The exact sequence is proprietary.